

Environmental Resources and Energy Committee

Images supporting written testimony

Marilyn V. Howarth, MD, Director

November 17, 2021

Presentation Date



Toxic Air Emissions PES Refinery During Operations

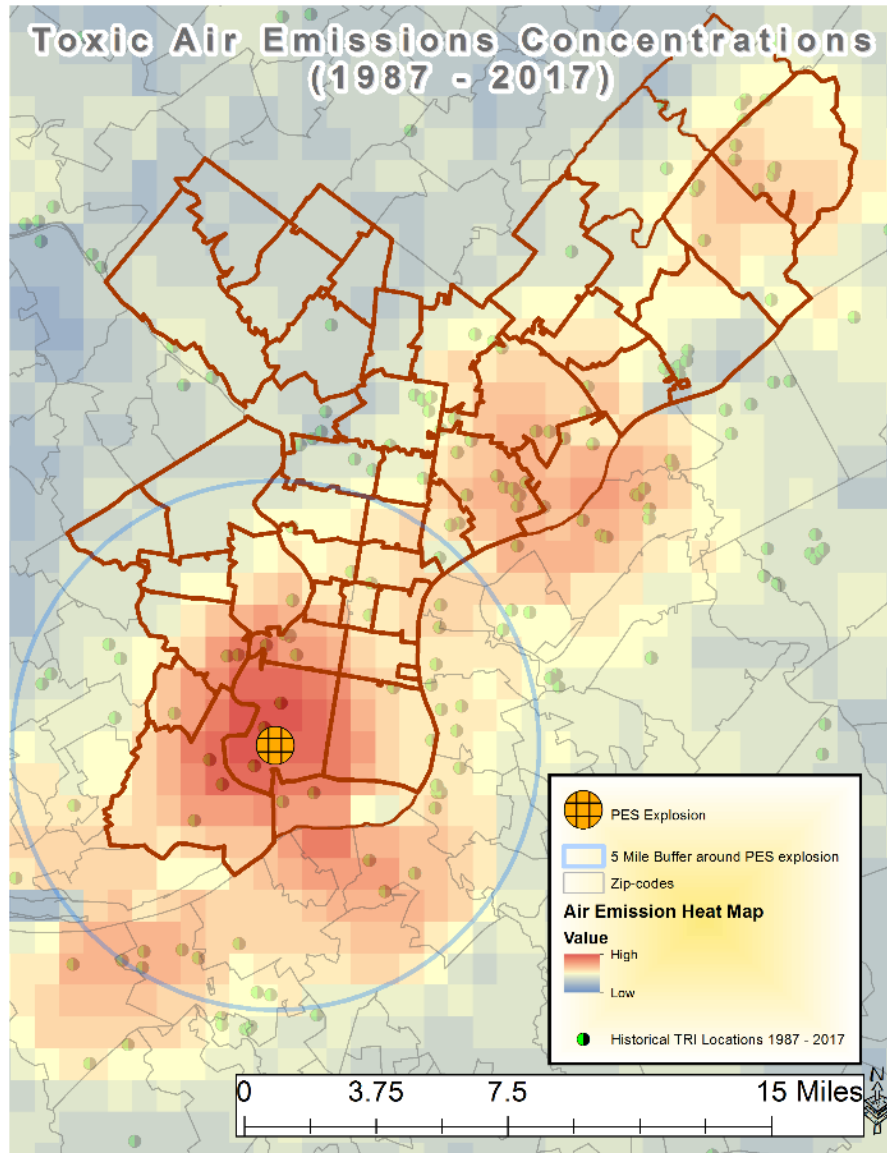
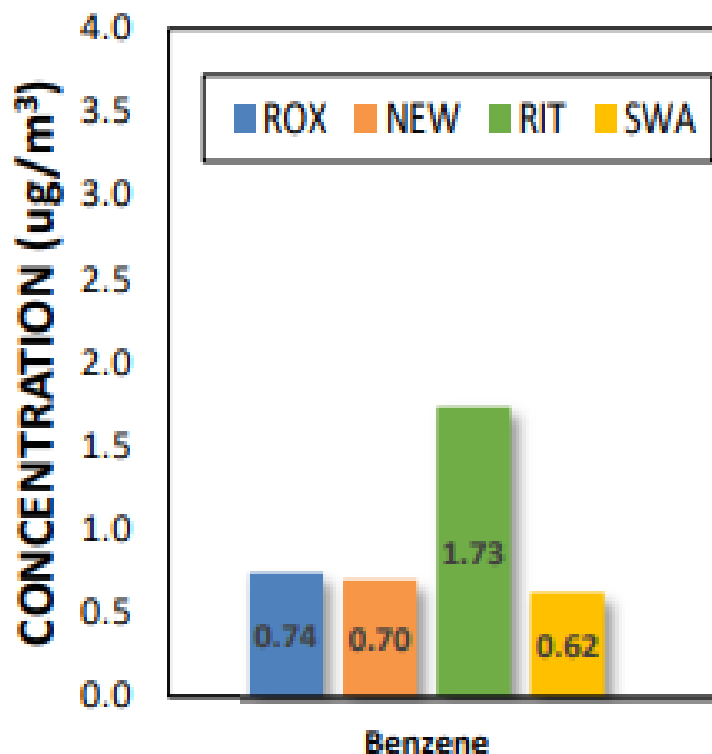


Figure 1 Benzene in Air Detected at Four Philadelphia AMS Monitors



Philadelphia's Air Quality Report 2020

https://www.phila.gov/media/20210930085223/AQR_2020_FINAL.pdf

Figure 2. Average Daily Traffic on Roads Near PES Fenceline Neighborhoods

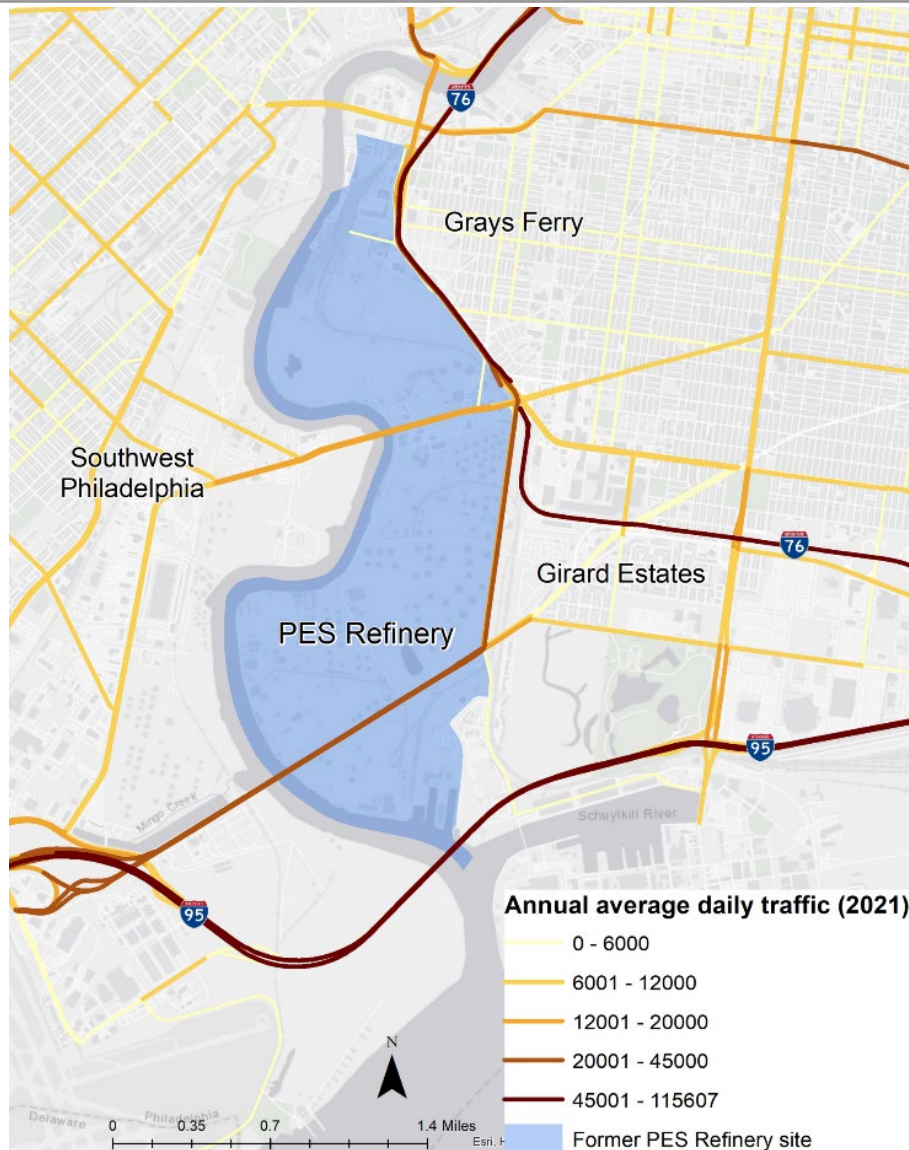
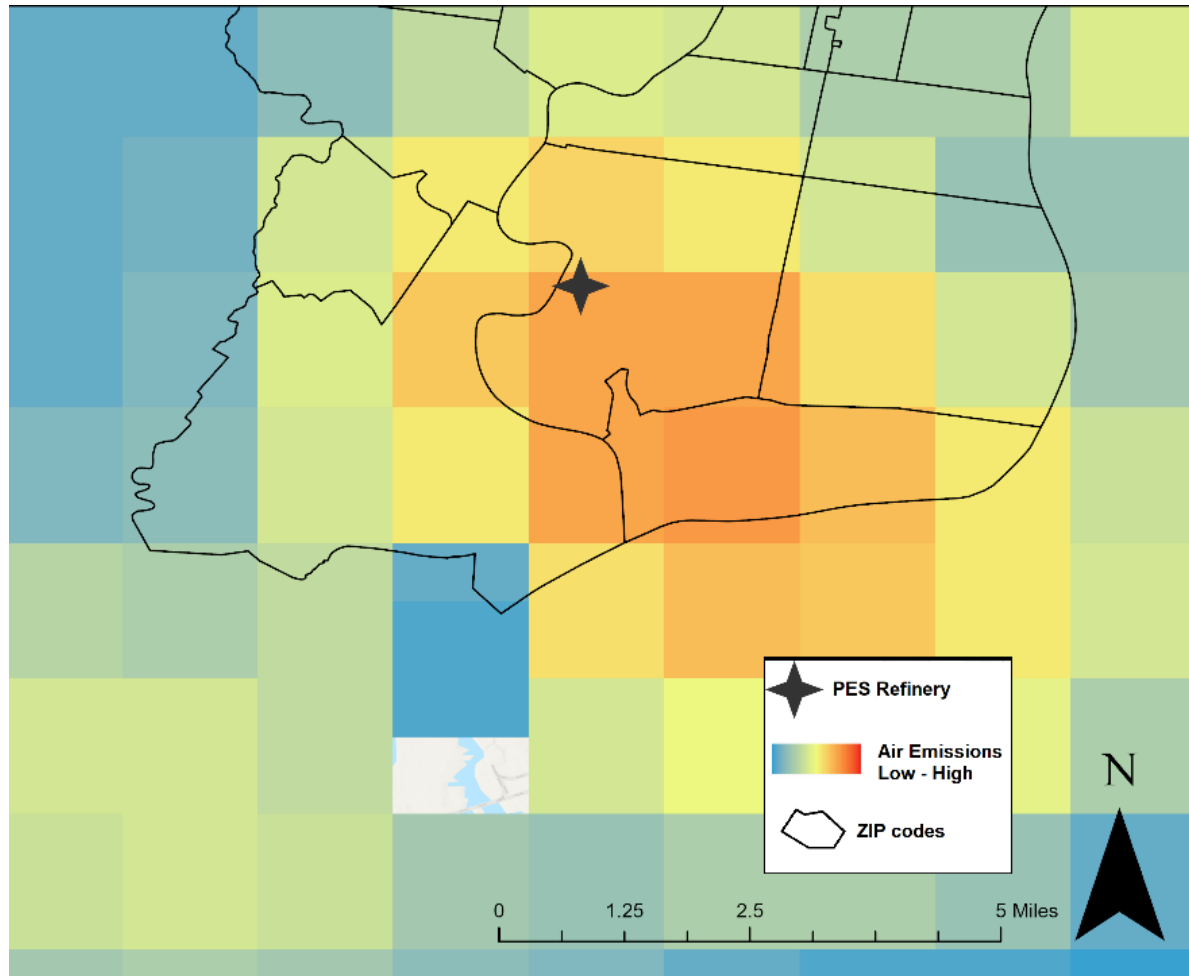


Figure 3. Lung carcinogen exposure near PES site in Philadelphia





<https://www.facebook.com/CECatCEET>



@UPennCEET_CEC