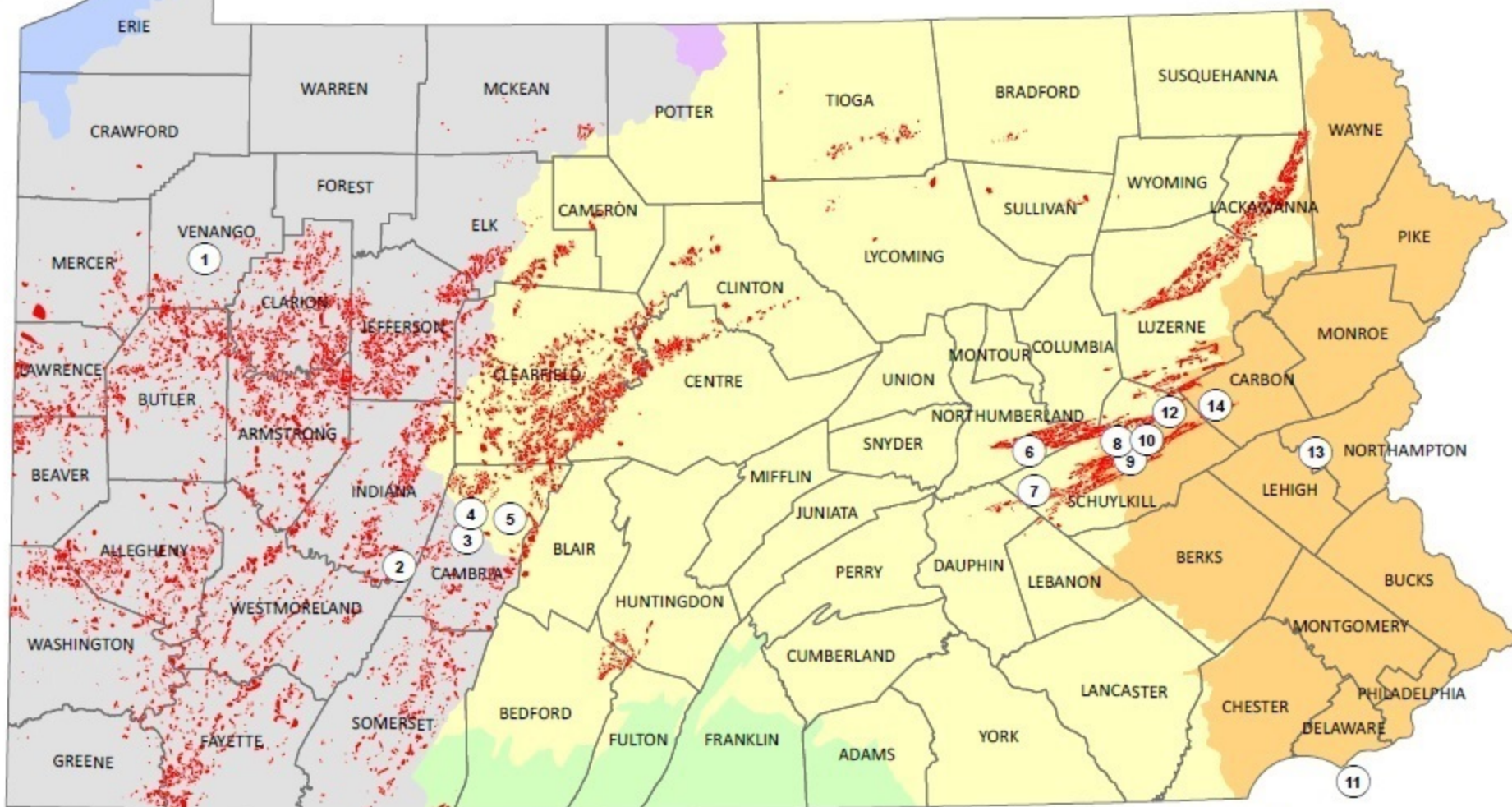




PA Coal Refuse Plants Location Relative to the PA AML Problem Areas & the Area's Water Basins



PA Coal Refuse Plants (1,419 MW & 10,922,000 Tons/Year)

1. Scrubgrass Generating - 83 MW; 644,000 TPY
2. NRG Seward - 525 MW; 2,925,000 TPY
3. Ebensburg Power - 50 MW; 536,000 TPY
4. Colver Power Project - 102 MW; 701,000 TPY
5. Cambria Cogen Company - 85 MW; 664,000 TPY
6. Mt. Carmel Cogen - 40 MW; 529,000 TPY
7. Westwood Generation - 30 MW; 384,000 TPY

8. Schuylkill Energy Resources, Inc. - 80 MW; 1,300,000 TPY
9. Gilberton Power Company - 80 MW; 575,000 TPY
10. Wheelabrator Frackville Energy Company - 42 MW; 535,000 TPY
11. Kimberly Clark Chester Plant - 60 MW; 223,000 TPY
12. Northeastern Power Company - 52 MW; 559,000 TPY
13. Northampton Generating Co. - 107 MW; 651,000 TPY
14. Panther Creek Energy - 83 MW; 696,000 TPY

Water Basins



 **Abandoned Mine Land Problem Areas**